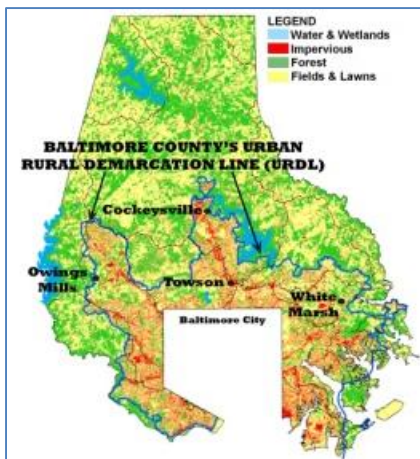


NeighborSpace Elects Barrett as Director, Murphy as President

TOWSON, MD. NeighborSpace of Baltimore County, a non-profit land trust, has elected Robert J. Barrett, to membership on the Board. Currently an Executive Officer within the Baltimore County Public Schools, Barrett spent his early career as a commercial realtor before embarking on a career in public service. He spent eight years as a senior aide for County Executive Dutch Ruppertsberger and another eight years as Director of the County Department of Recreation and Parks under the administration of County Executive Jim Smith. During Mr. Barrett's tenure as Recreation and Parks Director, the Department acquired or developed nearly 600 acres of open space within the URDL.

At its June meeting, the Board also elected new officers, with John V. Murphy elevated to the position of Board President. John has a long and distinguished career as an attorney and public servant, having served as a County Councilman from the 1st District from 1974 to 1978, a member of the Baltimore County Board of Appeals from 1980 to 1982, a member of the Planning Board from 1997 to 1998, Chairman of the County Council's Commission to Review the Redistricting Process in 2002, and a hearing officer and Deputy Zoning Commissioner from 2003 to 2007. He practices law with his daughter, Maureen Murphy, in the firm of Murphy and Murphy in Catonsville.

Other officers elected in June include local architect Klaus Philipson as 1st Vice President, Howard County Director of Planning Marsha McLaughlin as 2nd Vice President, Susquehanna Bank Vice President Barry Luciani as Treasurer and local activist Kathy Reiner Martin as Secretary. All will serve one-year terms.



For more information about NeighborSpace, please contact Barbara Hopkins, Executive Director, at 443-610-8601

NeighborSpace is a 501(c)(3) non-profit land trust promoting more livable communities in Baltimore County's established neighborhoods by acquiring land to serve as small parks, gardens and natural areas within the Urban Rural Demarcation Line (URDL), the area outlined at left. Outside the URDL, neither public water nor sewer utilities exist, a result that curtails development and protects rural open space. Inside the URDL, population is dense and open space is scarce, with 90% of the County's 16,000 residents living on just 30% of the total land area. NeighborSpace has protected 9 properties valued at over \$1 million and contributing 26 acres toward open space within the URDL to date. For more information, visit www.neighborspacebaltimorecounty.org.